

**CABBY**

2012





# A new generation of Cabby

It is true that **caravanning** is largely about escaping everyday life, finding experiences and relaxing. However, this does not mean that you have to leave civilisation behind you. With Cabby, we show that it is possible to demand at least the same high standards and enjoyment in a caravan as you experience at home.

A **clear design** with harmoniously sweeping lines, warmth in the form of the apple wood that is used for the interior and the entirely newly designed bathroom – which has drawn inspiration from both boats and spas – provide an exclusive feel that would not be out of place in most homes. Added to this are a newly designed front and a new rear section, with the result that we are presenting an entirely new Cabby.

A **newly designed kitchen**, including a unique, extendible additional surface and storage solution in several of the models, as well as the market's best soft-close-system in the drawers and overhead cupboards. The generous ceiling height and unusually high level of seating comfort. Curved toilet doors for additional leg room. We have thought about things, listened to our customers and made developments to give you the most comfortable caravans on the market.

As usual, a **new Cabby** is fully equipped from the outset. However, we are now giving you even more opportunity to personalise your caravan. With an impressive twelve new layouts, it is even easier for you to find the Cabby that suits your needs. With new fabrics, new curtains and a series of options for you to choose between as regards interior fittings and equipment – both as standard and in the form of optional extras – you can create exactly the caravan you want.

And this is **just a small selection** of the elements we have introduced for you. We have counted no less than **120** new features and changes. And many of these are so extensive that we can talk without exaggeration about an entirely new generation of Cabby.

And you are holding it in your hands – welcome aboard, Cabby.

Cabby Comfort Concept	4
Cabby Safety System	6
new features	8
Cabby winter	16
Caienna	20
our models	24
Single	26
Double	32
Flexi	38
Family	42
Fabrics	48
Technical details	59
Standard equipment	66
interior options	70
exterior options	74
view us in detail	76
Summary of models	78





# The winter caravan – the best summer caravan

Holidays in a caravan should be comfortable. And this has never been more true than it is today. Developments are taking both us and the sector continually forwards. Yet there is one thing that persists in all of our caravans – the Cabby method.

The tried and tested technique, which we have been using since the very start, is still unsurpassed when it comes to creating the most comfortable indoor climate on the market, both in summer and winter. This method also constitutes the foundation for the Cabby Comfort Concept.

The secret behind the Cabby method is the extremely well-insulating polyurethane material that creates

a minimum of seams in the walls and ceiling. The highly-insulating polyurethane foam is injected between the outer and inner walls, in the floor and ceiling to fill the void. This forms a sandwich structure that is extremely strong and stable.

Using the Cabby method means that the cold is kept out in the winter and the warmth is kept out in the summer. *Read more about the Cabby method on pages 63 – 65.*

## **Effective heating system**

The Cabby method offers by far the best insulation on the market, and all our caravans also feature an unbeatable heating system that helps create greater comfort. Each caravan includes warm water central heating, with several heating coils in the floor and air gaps along the walls to create an even and well-ventilated indoor climate.



# With the focus on your safety

Our safety features are collectively known as the Cabby Safety System, and permeate every component and all aspects of our work. In most cases this cannot be seen, and ideally we don't want you to see it. But you can feel it.

You can feel it when you are towing the caravan behind your car, particularly when roads and weather conditions leave a lot to be desired. And you can feel it when you are staying in the caravan. It relates to the most important part of the total experience – security.

With a Cabby you get an easy-to-tow caravan with track stability. This is largely thanks to our scrupulous safety work.

All our caravans have an extremely well-balanced chassis that is specially produced for Cabby and gives the body the correct degree of stability. What you get is a unique suspension system that can cope with all types of road surface, as well as nitrogen-filled tyres that minimise variations in tyre pressure. The ATC prevents the caravan from snaking and the A stabiliser hitch has a stabilising effect.

## **xtra strong and stable**

The Cabby method, in combination with the 'over lock' technology which locks the transitional sections between ceiling, front and walls without creating thermal bridges, makes our caravans extremely strong and stable. *Read more on pages 6 – 6 .*



CABBY

XSK 363

*New features on the outside!*



## Presenting a new generation

Cabby's stylish exteriors have been further developed for 2012. From an aesthetic perspective, this can principally be seen from the new rear section and the front that has been augmented with integrated LED lighting. In purely practical terms, you will notice the new, robust handles that makes manoeuvring easier. And the wider door.









# A warm welcome

When you look inside a Cabby 2012, you will immediately be struck by the warm welcome. The interior fittings that are characterised by apple wood and the fresh textiles all bear closer inspection. Feel free to touch, press, open and hold hatches, doors and interior fittings. We have found harmony in the form of soft lines. With an extra coat of varnish on the interior fittings and our unique Soft Close system in the kitchen drawers, we have created a genuine feeling throughout the caravan. A feeling that is infectious, and quickly makes you feel at home.





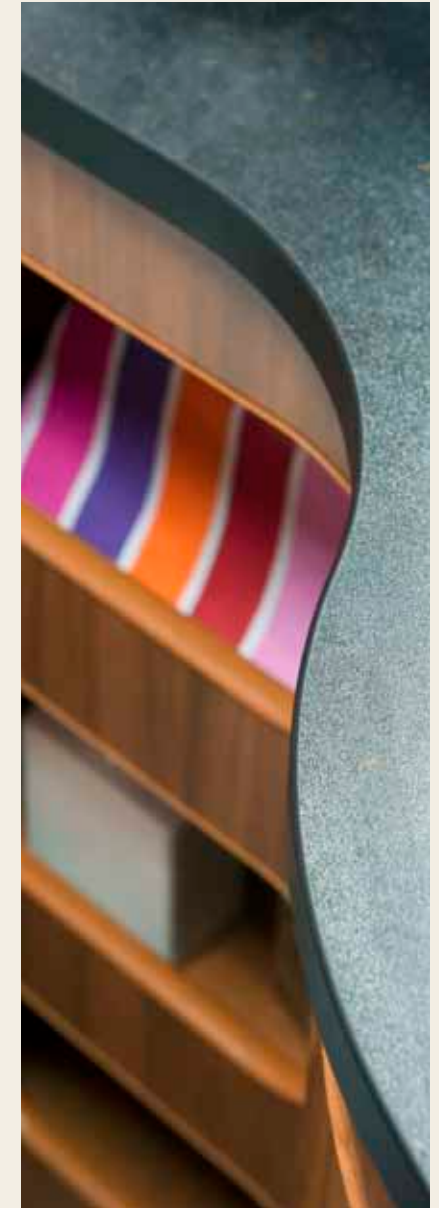
Superior seating comfort and ample ceiling height – you don't need to have the curtains over your head in the sitting area. And with seven entirely new fabric alternatives and masses of options, you can set your own personal stamp on your Cabby.





## Proper bathrooms

Taking inspiration from the boating sector, we have created entirely new bathrooms for 2012 that incorporate a spa feel. New, modern, smart solutions. Our LT models are a natural alternative for anyone who wants a proper bathroom. For example, they offer the largest shower area on the market and the potential for you to choose for yourself which side you want the toilet to be.





It's the details that make the difference. Despite the fact that we are waging a constant battle against gravity, with demands for caravans that are as light as possible, we have succeeded in creating a genuine feel. Cabby's caravans last for a long time and cope with being used extensively.





## Kitchen like at home

With an entirely new design and smart solutions, the kitchen in our caravans is the first thing you will see when you step inside. Apple wood, soft shapes and a robust feel, augmented with smart, functional solutions that in all probability you will not even have in your kitchen at home.



The newly developed storage solution and additional surface found in all corner kitchenettes would not be out of place in most home kitchens.





Always well equipped. A Cabby has everything you need as standard – and a little besides. Yet you still have a wide range of options to choose between in order to personalise your caravan. For example, the accent wall in the kitchen is available in a range of variants. The four-burner gas cooker and Soft Close on all kitchen drawers come as standard. The LED lighting that has replaced all the halogen bulbs is not only energy-efficient, but also has a long life.









# The true Winter Caravan

For us, using the caravan in the winter is just as natural as in the warmer months. For this reason, our Cabby caravans are designed, built and equipped with our Nordic winters in mind. And with the best insulation on the market, they are also the coolest and most comfortable caravans when the mercury is at the other end of the thermometer. Cabby is a caravan to be enjoyed all year round.

## **More comfortable indoor climate**

Cabby is designed for a harsh winter climate. What you get is a caravan with a comfortable temperature inside, when the cold makes itself felt outside. This is mainly down to the extremely well-insulating material, polyurethane, used in the construction of all our caravans to create a more comfortable indoor climate all year round. *Read more about the Cabby method on pages 63 – 65.*

## **Comfortable flooring in your caravan**

Every Cabby features good-sized air gaps to help create an even, well-ventilated heat. Our warm water underfloor heating system with several heating coils ensures a pleasant feeling of warmth when you put your feet down on the floor of your caravan. A heated drainage system is fitted as standard in all our caravans to prevent ice blockages.

## **Warm, dry shoes and clothing**

All Cabbys have a heated shoe compartment as standard, and most models have a drying cupboard with a ventilation fan, so that you can always dress in warm, dry clothes before heading out into the winter cold. To help keep your ski equipment in order, there is a ski compartment with lighting that you open from the outside on all caravans.





- ! Thanks to the Cabby method, we have unbeatable insulation throughout the caravan that also makes it energy-efficient
- ! Central-heating with three output settings
- ! Warm water underfloor heating for the best possible heat distribution
- ! Well-adapted air gaps that help create even, well-ventilated warmth
- ! Drying cupboard with ventilation fan in most models
- ! Ski compartment and storage space with lighting
- ! Heated drainage system
- ! Heated shoe compartment

Giving consideration to energy consumption is only natural nowadays. Thanks to the superior insulation and the intelligent heating system, combined with LED lighting and other smart solutions, the Cabby 2012 is incredibly energy-efficient.







# Successful Caienna caravan

Cabby caravans have one of the highest levels of equipment on the market as standard. With the Caienna, however, we have really not stinted on anything. We have made a caravan for people who do not want to choose. Who do not

want to compromise. When we introduced the Caienna last year, we knew that we were on the right track, but could never have imagined this level of success. This year we are taking another step, and you can now acquire all models as the

all-inclusive - exclusive Caienna. You decide for yourself on the size of caravan, the layout and the soft furnishings you want. The rest is carefully put together to ensure you experience something new and extra special. Caienna offers

comfort you can enjoy, whether holidaying in the depths of winter or the height of summer. Our exclusive series will take your caravaning experience to a higher level.



### As standard in Caienna

Individually adjustable underfloor and radiator heating with a unique switch between the temperature sensors in the front and rear sections of the caravan

Cooker U -style four-burner gas cooker with oven and grill (door at the bottom)

Media centre D D

itchen worktop, coffee table, dinette table, T entrance furniture and bathroom worktop in black laminate

itchen overhead cupboard doors in frosted, black acrylic

itchen glass cabinet and door for glass cabinet in the walk-in wardrobe in black acrylic

Designer tap in kitchen

Bathroom tap cascade model

Brushed aluminium on the kitchen wall and the front of the refrigerator

Wave-shaped headboard in frosted acrylic with LED lighting

Black table stand for sofa and dinette table

LED lighting with aluminium fittings next to beds and corner shelves at front

LED lighting with dimmer switch and aluminium fittings in ceiling above sofa at front

Large refrigerator with separate freezer

Electric towel dryer

Two speakers at the back

570 F3 with 2 1 2 section kitchen

Most models include microwave oven

T shelf at back with 230 and T socket in most models

Heki 2 sunroof 96x65.5 cm with lighting

Sunroof Mini-Heki 40x40 cm next to the bed

Omnidirectional antenna

Mosquito net door

Roof rails

Black waist-line trim, exterior

Caienna decals, exterior

Tail light section in black acrylic



In the Caienna, the black worktops, brushed aluminium on the kitchen wall and exclusive details come as standard. All of these extras are present from the outset.

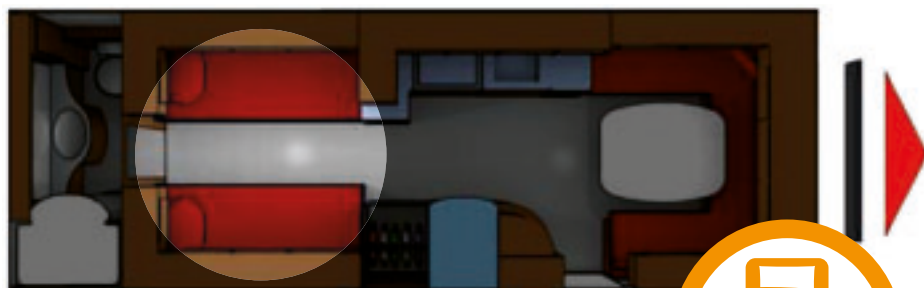


# How do you want things?

Single or double bed, family caravan or flexi There are many decisions to be made and a great deal to think about. However, the main thing is to find a model that you like and that suits your needs.

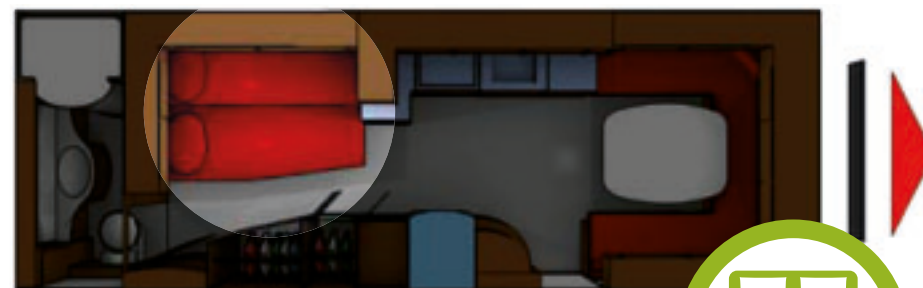
To make it easier to find the right solution from our model range, we have divided our caravans into four categories *Single Double Flexi* and *Family*.





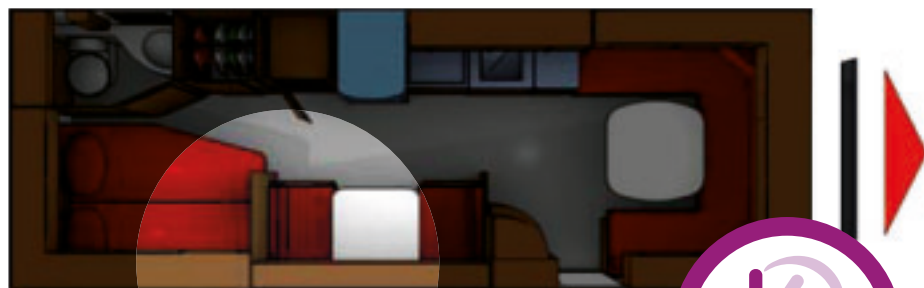
### SINGLE

For those who prefer to sleep in separate beds. Single is available in sizes 620–800.



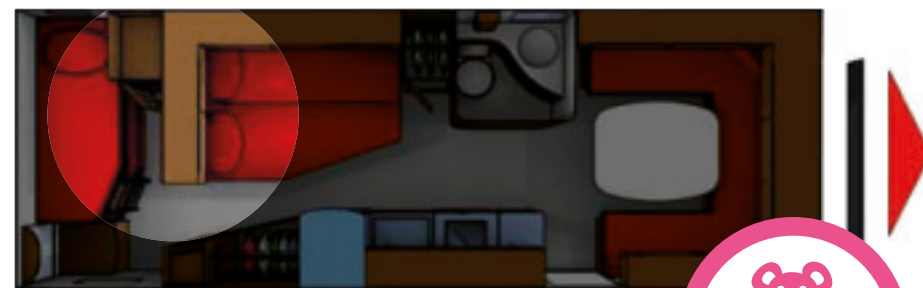
### DOUBLE

When you want to sleep in an ordinary double bed. Double is available in sizes 570–740.



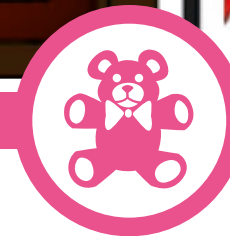
### FLEXI

The sitting area and the upper bed cupboard can easily be converted to create two extra beds. Flexi is available in sizes 620–800.



### FAMILY

Family caravan with bunk beds for the children. Some of our caravans also have a separate children's compartment. Family is available in sizes 620–800.



# *Single* – for a comfortable holiday

*Single* is perfect for those who prefer the comfort of sleeping in their own bed. The caravan is well planned with plenty of space for everyone to enjoy themselves.



## New feature!

### L Single

*L Single* is a caravan for those who prioritise spacious comfort and sleeping in their own bed. The practical kitchen, bathroom and wardrobe are located in the middle of the caravan. Sit in comfort at the front of the caravan in the pleasant sitting area that is simple to convert into sleeping spaces in the evening.



### Cabby 620 L



A-dimension	1020 cm	Internal length	555 cm
Total length body	625 cm	Internal width	234 cm
Total length	751 cm	Weight	1,490-1,800 kg

### Cabby 650 L



A-dimension	1050 cm	Internal length	585 cm
Total length body	655 cm	Internal width	234 cm
Total length	796 cm	Weight	1,570-1,800 kg



## New feature!

### LTD and LTF Single

The caravan for people who like smart solutions. Irrespective of the size, you will be struck by the areas that are offered. This is particularly true of the entirely newly developed bathroom, with its wonderful spa feel, which is located at the very rear of the caravan. Here you will find the most spacious shower cubicle on the market, and you can decide for yourself which side you want the toilet to be. That is the difference between LTD and LTF. (LTD, toilet on door side, and LTF, toilet on window side.)

#### Cabby 700 LTD



A-dimension	1100 cm	Internal length	630 cm
Total length body	700 cm	Internal width	234 cm
Total length	841 cm	Weight	1,900 kg

#### Cabby 700 LTF



A-dimension	1100 cm	Internal length	630 cm
Total length body	700 cm	Internal width	234 cm
Total length	841 cm	Weight	1,900 kg

#### Cabby 740 LTD



A-dimension	1135 cm	Internal length	670 cm
Total length body	740 cm	Internal width	234 cm
Total length	872 cm	Weight	2,400 kg

#### Cabby 740 LTF



A-dimension	1135 cm	Internal length	670 cm
Total length body	740 cm	Internal width	234 cm
Total length	872 cm	Weight	2,400 kg

#### Cabby 800 LTD

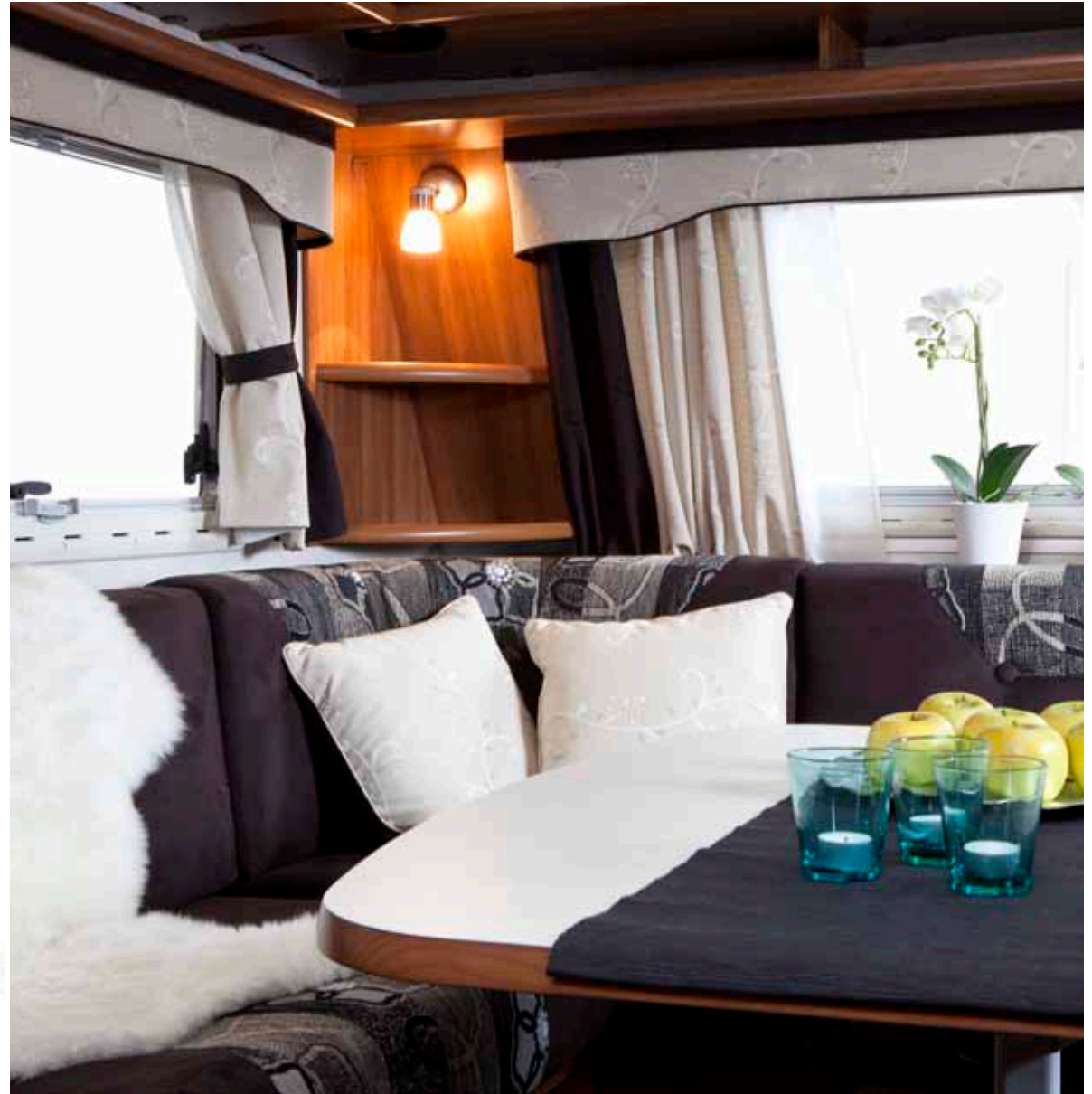


A-dimension	1195 cm	Internal length	740 cm
Total length body	810 cm	Internal width	234 cm
Total length	942 cm	Weight	2,400 kg

#### Cabby 800 LTF



A-dimension	1195 cm	Internal length	740 cm
Total length body	810 cm	Internal width	234 cm
Total length	942 cm	Weight	2,400 kg









# **D** *le* – for maximum comfort

*Double* is a caravan featuring maximum comfort and a cosy layout. It is fitted with a good-sized double bed and has well thought-out storage space.





### F3 Double

*F3 Double* is one of our most popular models. The ample double bed is fitted at the rear of the caravan while, in the front compartment, the sitting area can easily be converted to create extra sleeping places. The well-equipped kitchen area completes the caravan.

### Cabby 570 F3



A-dimension	980 cm	Internal length	510 cm
Total length body	580 cm	Internal width	234 cm
Total length	704 cm	Weight	1,430-1,800 kg

### Cabby 620 F3



A-dimension	1020 cm	Internal length	555 cm
Total length body	625 cm	Internal width	234 cm
Total length	751 cm	Weight	1,490-1,800 kg

### Cabby 650 F3



A-dimension	1050 cm	Internal length	585 cm
Total length body	655 cm	Internal width	234 cm
Total length	796 cm	Weight	1,570-1,800 kg



### F4 Double

*F4 Double* is a model that is available in three sizes. The caravan is fitted with a practical corner kitchen, a comfortable sitting area and a cosy sleeping compartment with double bed.

#### Cabby 570 F4



A-dimension	980 cm	Internal length	510 cm
Total length body	580 cm	Internal width	234 cm
Total length	704 cm	Weight	1,430-1,800 kg

#### Cabby 620 F4



A-dimension	1020 cm	Internal length	555 cm
Total length body	625 cm	Internal width	234 cm
Total length	751 cm	Weight	1,490-1,800 kg

#### Cabby 650 F4



A-dimension	1050 cm	Internal length	585 cm
Total length body	655 cm	Internal width	234 cm
Total length	796 cm	Weight	1,570-1,800 kg





The F4 models offer generous space, comfort and smart solutions. The corner kitchen with the pull-out storage and additional worktop is one example of this. The generous ceiling height at the front of the caravan, which provides seating comfort superior to that in all our competitors, is another.



### FT Double

*FT Double* is the perfect caravan for those unprepared to compromise on comfort or quality. The caravan is fitted with a generous-sized double bed and smart storage. The bathroom and shower are at the rear of the caravan.

### Cabby 650 FT



A-dimension	1050 cm	Internal length	585 cm
Total length body	655 cm	Internal width	234 cm
Total length	796 cm	Weight	1,570-1,800 kg

### Cabby 700 FT



A-dimension	1100 cm	Internal length	630 cm
Total length body	700 cm	Internal width	234 cm
Total length	841 cm	Weight	1,900 kg

### Cabby 740 FT



A-dimension	1135 cm	Internal length	670 cm
Total length body	740 cm	Internal width	234 cm
Total length	872 cm	Weight	2,400 kg



### FM Double

With *FM Double* you get a caravan with a practical layout. The bedroom is screened off from the rest of the interior and has a good-sized double bed. Equipped with everything you need, the kitchen area is in the middle of the caravan and the U-shaped sitting area can easily be converted to create extra beds.



### Cabby 740 FM



A-dimension	1135 cm	Internal length	670 cm
Total length body	740 cm	Internal width	234 cm
Total length	872 cm	Weight	2,400 kg



# *Flexi* – offers more options

With *Flexi* you decide yourself how you want it to be. The layout offers you the option of more sleeping places as the smaller sitting area and upper bed cupboard can easily be made up into extra beds.



### M Flexi

With *M Flexi* you get a wonderful caravan with a multi-purpose layout. The sitting area at the front of the caravan functions as a dining area during the day and sleeping area at night. The caravan's smaller sitting area and upper bed cupboard can easily be converted to create extra beds at night.



### Cabby 700 M



A-dimension	1100 cm	Internal length	630 cm
Total length body	700 cm	Internal width	234 cm
Total length	841 cm	Weight	1,900 kg

### Cabby 740 M



A-dimension	1135 cm	Internal length	670 cm
Total length body	740 cm	Internal width	234 cm
Total length	872 cm	Weight	2,400 kg



### F2B Flexi

F2B Flexi is a flexible caravan with a practical kitchen and plenty of space for everyone to enjoy themselves. If you have guests or grandchildren to stay, you can quickly and easily convert the caravan's small sitting group and upper bed cupboard to create extra sleeping places.



### Cabby 620 F2B



A-dimension	1020 cm	Internal length	555 cm
Total length body	625 cm	Internal width	234 cm
Total length	751 cm	Weight	1,490-1,800 kg

### Cabby 650 F2B



A-dimension	1050 cm	Internal length	585 cm
Total length body	655 cm	Internal width	234 cm
Total length	796 cm	Weight	1,570-1,800 kg





### FT Flexi

*FT Flexi* is the layout for those unprepared to compromise on comfort or quality. A generous double bed and plenty of space. The sitting area in the middle and the upper bed cupboard can quickly be converted to create extra beds. With the new bathroom, you are getting the largest and best shower on the market.

### Cabby 800 FT



A-dimension	1195 cm	Internal length	740 cm
Total length body	810 cm	Internal width	234 cm
Total length	942 cm	Weight	2,400 kg



### FTM Flexi

*FTM Flexi* is a model offering several smart solutions. The smaller sitting area in the middle and the upper bed cupboard can easily be converted to create extra beds. Large kitchen and spacious bathroom with shower and toilet.

### Cabby 800 FTM



A-dimension	1195 cm	Internal length	740 cm
Total length body	810 cm	Internal width	234 cm
Total length	942 cm	Weight	2,400 kg



# *F il* – perfect for the family

*Family* is the perfect solution for both large and small families. Fitted with a bunk bed and double bed as standard, some models even have a separate children's compartment.

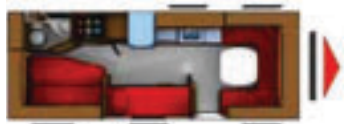


### M2C Family

With *M2C Family* you get a caravan with plenty of space and smart storage solutions. The caravan is fitted with a double bed and bunk bed. It features an attractive kitchen area and a comfortable sitting area. The layout even includes substantial storage space that you can access from the inside as well as outside of the caravan.



### Cabby 700 M2C



A-dimension	1100 cm	Internal length	630 cm
Total length body	700 cm	Internal width	234 cm
Total length	841 cm	Weight	1,900 kg

### Cabby 740 M2C



A-dimension	1135 cm	Internal length	670 cm
Total length body	740 cm	Internal width	234 cm
Total length	872 cm	Weight	2,400 kg



## New feature!

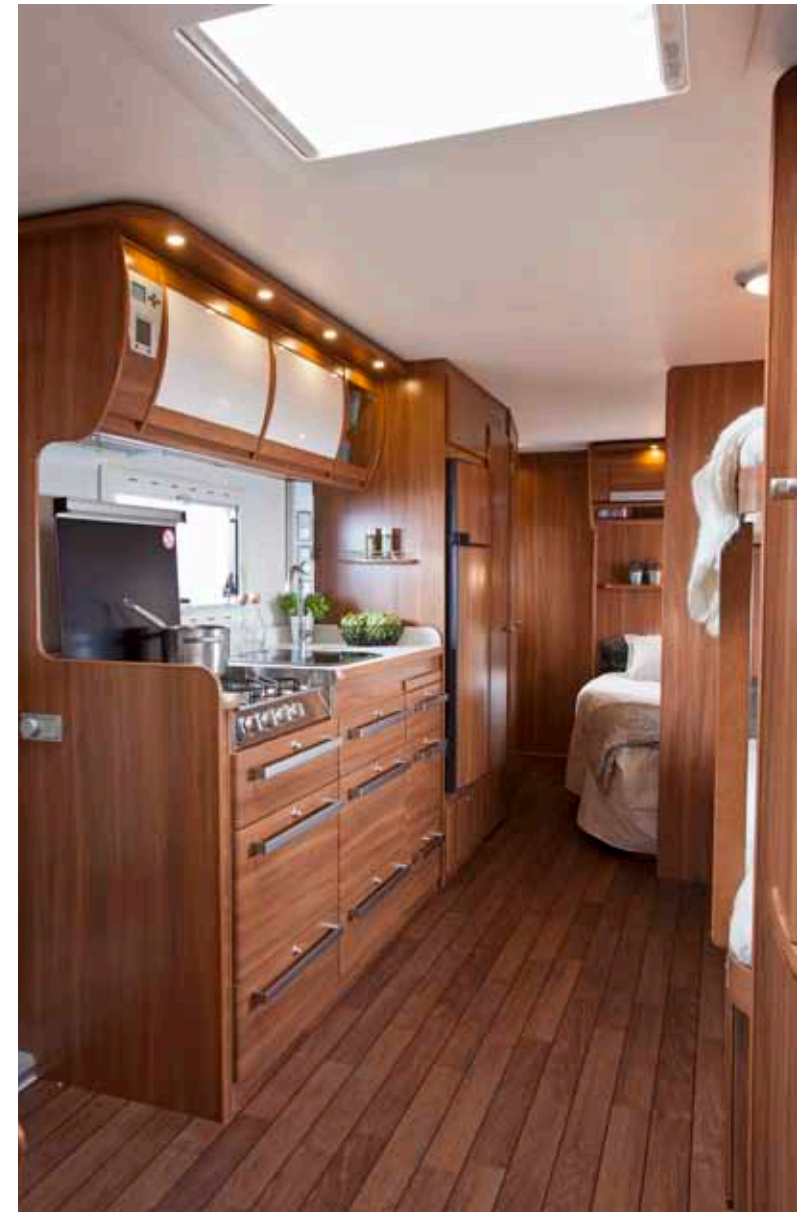
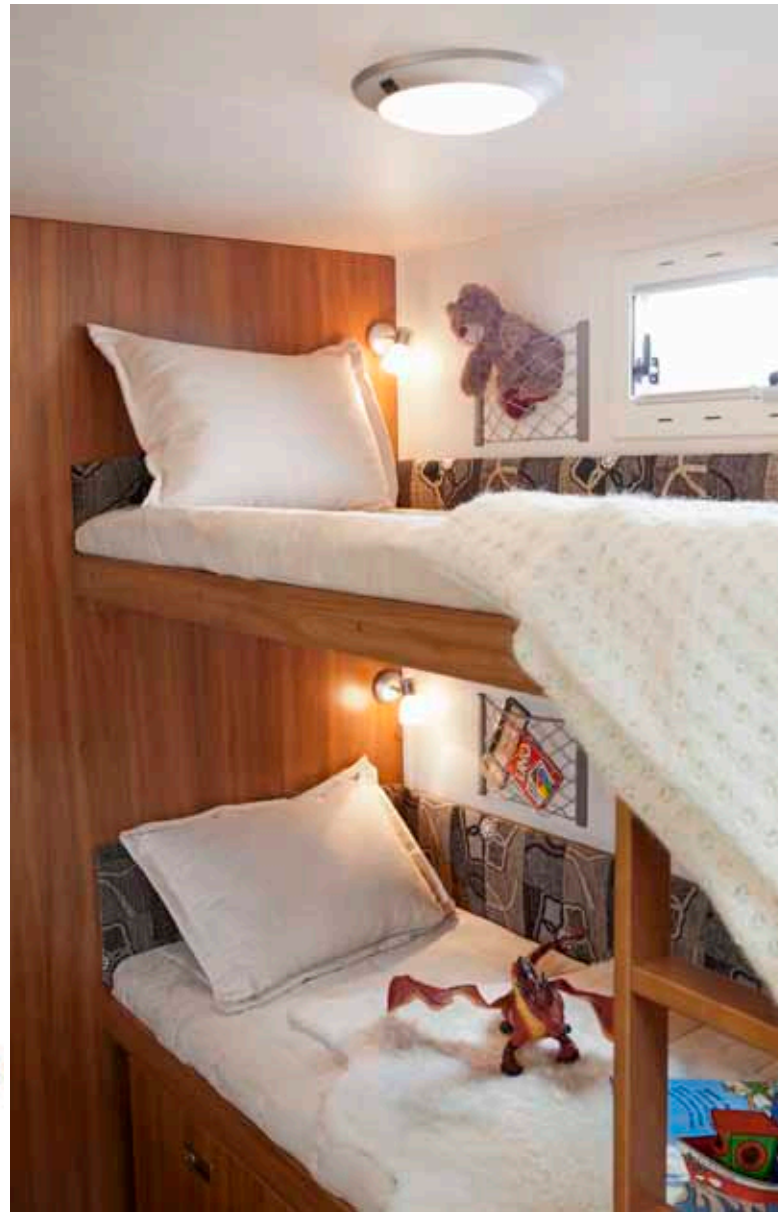
### FTM2C Family

FTM2C is a large family caravan with a lot of space and smart storage solutions. The caravan is fitted with a double bed and bunk bed. The entirely newly developed bathroom with its spa feel offers the largest and best shower on the market and is situated at the very rear of the caravan. The layout also includes substantial storage space under the double bed, which you can access both from the inside as well as the outside.

### Cabby 800 FTM2C



A-dimension	1195 cm	Internal length	740 cm
Total length body	810 cm	Internal width	234 cm
Total length	942 cm	Weight	2,400 kg





### F3F Family

F3F Family is a caravan with plenty of space for the large family. It has a practical, pleasant kitchen, a spacious sitting area, a smaller sitting area that can be converted into a bed, a bunk bed and, at the rear of the caravan, a double bed and bathroom.



### Cabby 800 F3F



A-dimension	1195 cm	Internal length	740 cm
Total length body	810 cm	Internal width	234 cm
Total length	942 cm	Weight	2,400 kg

### F2C Family

F2C Family is perfect for the family with small children. The bedroom is fitted with a double bed and bunk bed. The longer caravans have a separate sleeping compartment at the very back. Toys, games and clothes can be kept in the smart storage spaces and there is plenty of room at the front of the caravan for enjoyable meals together.



### Cabby 620 F2C



A-dimension	1020 cm	Internal length	555 cm
Total length body	625 cm	Internal width	234 cm
Total length	751 cm	Weight	1,490-1,800 kg

### Cabby 650 F2C



A-dimension	1050 cm	Internal length	585 cm
Total length body	655 cm	Internal width	234 cm
Total length	796 cm	Weight	1,570-1,800 kg

### Cabby 740 F2C



A-dimension	1135 cm	Internal length	670 cm
Total length body	740 cm	Internal width	234 cm
Total length	872 cm	Weight	2,400 kg

### Cabby 800 F2C



A-dimension	1195 cm	Internal length	740 cm
Total length body	810 cm	Internal width	234 cm
Total length	942 cm	Weight	2,400 kg



# Like being at home or different?

With our large selection of fresh, fashionable and timeless textiles and leathers, you have plenty of opportunity to find your favourite. You can set your personal stamp on your Cabby. The fabrics are woven in hardwearing and easy-to-maintain materials, specially produced for Cabby's furniture. The padding made of highly elastic cold foam retains its shape and recovers quickly. Our carefully selected upholstery and cushions offer both style and comfort.





## New feature!

### abriella

One of the new additions this year. Gabriella is both classic and modern at the same time.

She has a classic Swedish design for the flowery curtains. Upholstery and cushions in two fashionable colours, plum and grey, which perfectly match the curtains. Gabriella blends in well with the rest of the caravan's design.



## New feature!

### Camilla

With Camilla you get a light, attractive caravan. She is well able to be challenged with individual component colours. Choose the version with normal curtains or with our attractive panel variant, which is available as an option.





## New feature!

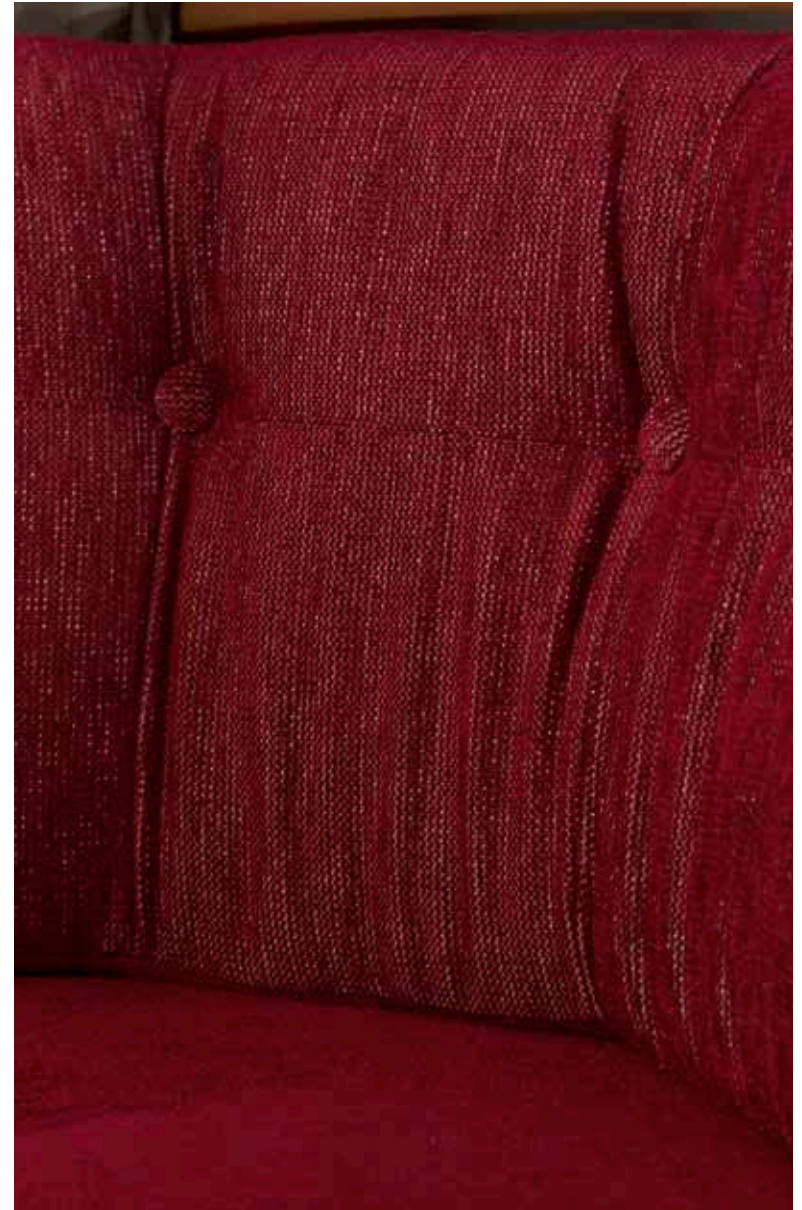
ne  
Our new blue upholstery. She carries your thoughts to a beautiful blue summer's sky and fresh blossoming flax. The curtains are modern with a Swedish-designed flower print. Why not get Inez in classic blue, and the summer will feel a little longer.



## New feature!

### velina

A wonderful red shade of upholstery that perfectly matches the Swedish-designed flowery curtains. A truly stylish, classic choice.





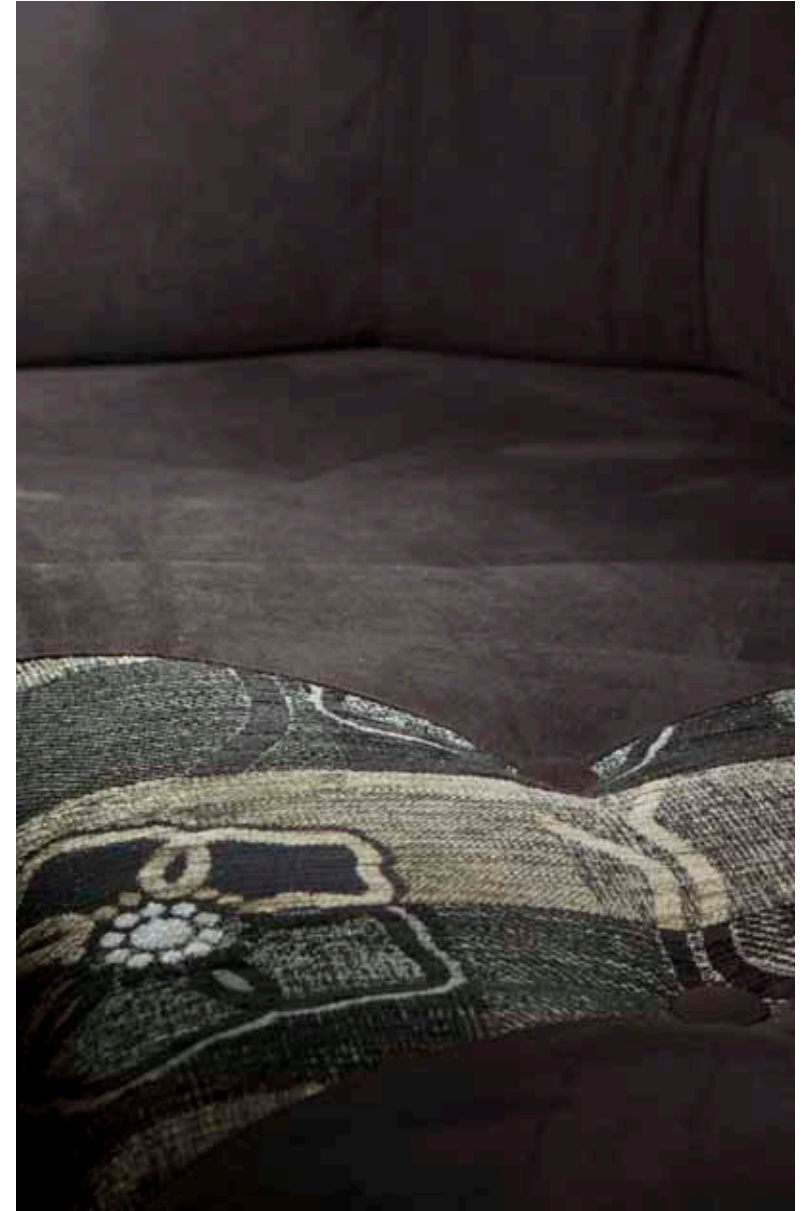
**Karin**  
An exciting, unusual upholstery, she is both courageous and tough, and has a wonderful structure.



**Fanny**

Our faithful servant here at Cabby, and has been with us for several years. She is still just as popular.

A new feature this year is her new, attractive stitching on the bedspread.





## *New feature!*

### **Beige Label**

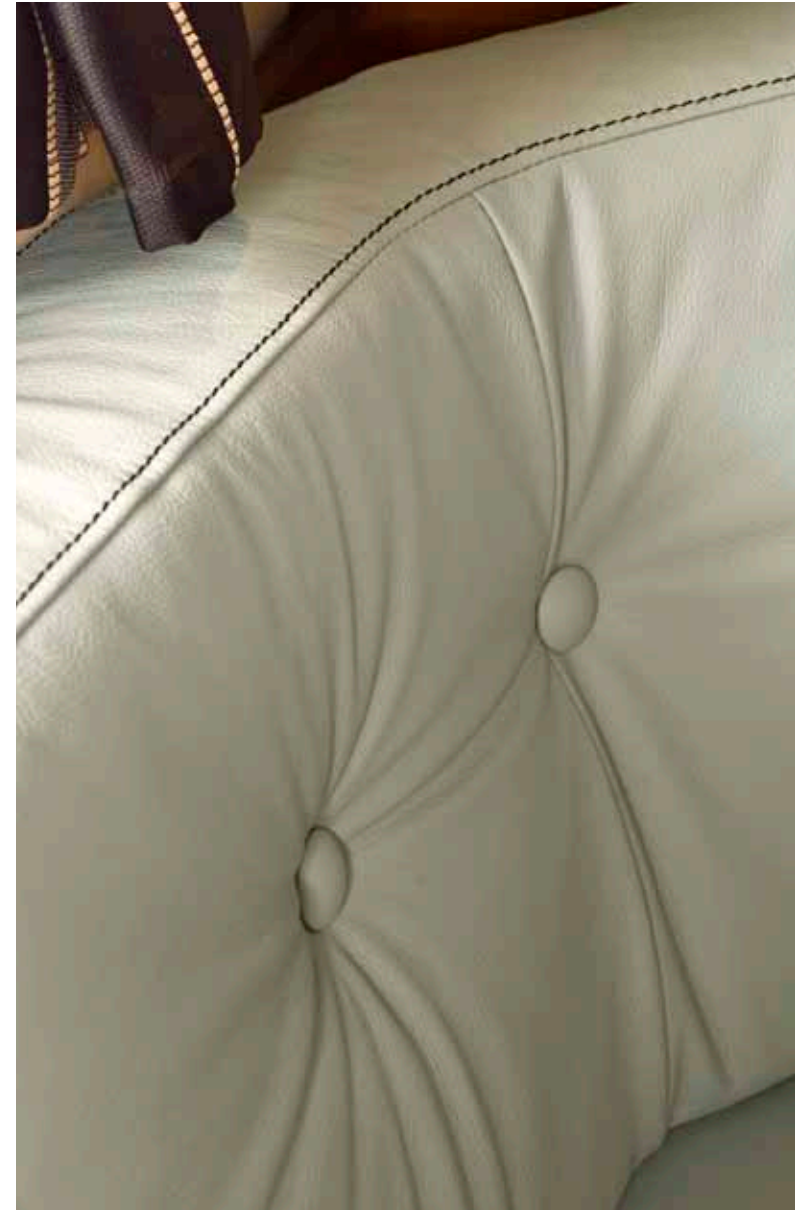
One of our more luxurious upholsteries in soft, beige leather. She has fashionable panel curtains in light colours with matching cushions. Even though the style is luxuriously adult, she is also suitable for families with children, as she is durable and easy to keep clean.



## New feature!

### Grey Label

Grey Label is our new grey leather concept. She has soft leather that is easy to keep clean. The modern curtains let in a pleasant amount of light and convey a European feel.







**Black Label**

Our upholstery in black, shiny leather. The unique bright red Cabby flowers on the other textiles give Black Label a softer impression. A choice for the stylish.

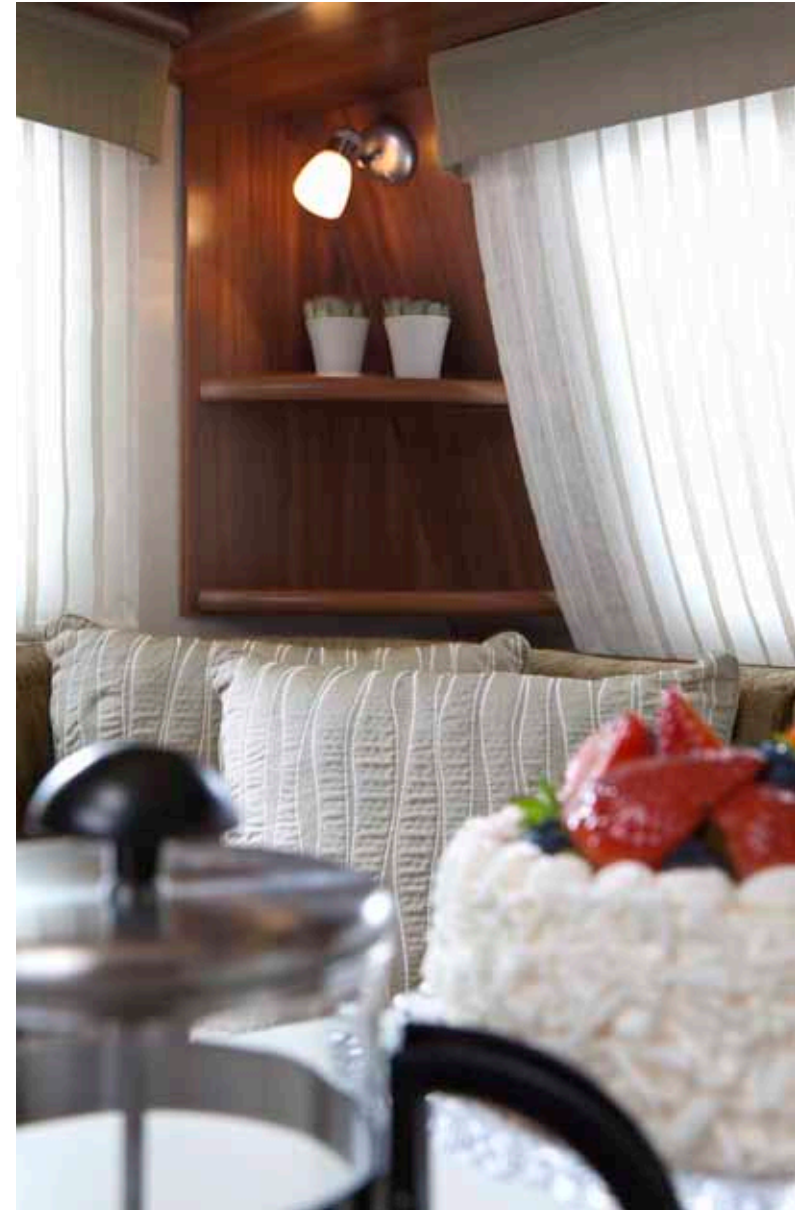


## Optional extras

*New feature!*

### Camilla panel curtains

Panel curtains that can be ordered as an optional extra for all concepts. Camilla panel curtains are made from a beautiful white, striped, semi-transparent fabric with a beige pelmet.



# Beauty comes from within

Here at Cabby, we devote a great deal of time to designing, shaping and equipping our caravans. Some of these are practical advances, while others raise the aesthetic bar. However, a great deal of what makes a Cabby a Cabby is hidden under the skin. Features that cannot be seen, but that make a real difference when it comes to safety and comfort. What we are talking about here are the materials that go into the walls and under the floor – smart, unique solutions that add to the comfort and enjoyment of your Cabby. On the following pages we explain some of the properties that make our caravans a particularly good investment.



# Cabby Safety System

The Cabby Safety System is the generic name for all our safety systems. They include a number of unique features that together offer the safest caravan by far to tow behind your car.

Towing a Cabby behind your car will give you nothing but pleasure. Whether your journey take you long distances on dead straight motorways or on narrow, winding roads in the depths of the countryside. The secret is Cabby-s well-balanced chassis from A - O combined with the highly rigid body.

The chassis is the caravan-s base and it influences the driving characteristics and the body-s strength.

A correctly designed chassis ensures good towing characteristics and does not expose the driver to any unpleasant surprises. t also gives the body the correct degree of steadiness, actively contributing to maximising driving stability.

## Brackets

Cabby-s chassis, with extra long traction spars, is equipped with four supporting brackets along the sides.

These support the weight of the sides and minimise the risk of the floor becoming bowed. The brackets concentrate the strength of the body, giving the caravan horizontal stability and minimising stresses imposed on the floor and interior fittings.

## Axle and wheel attachment

The fact that the chassis is horizontally stable is an important factor in



Thanks to ATC, you can feel safe behind the wheel, on poor roads as well as when oncoming traffic gets too close or you have to take sudden evasive action.



The corner steadies are secured to the chassis' longitudinal beams. This provides additional stability.



For many years, Cabby has been engaged in continuous development work to produce roadworthy chassis designs. This research has led to all Cabby's models being based on a design that gives the floor and body the full support of the chassis.

locating the axle and the tracking of the wheels. A stable axle and wheel attachment is an important contributory factor for track stability which, in the final analysis, minimises tyre wear, too. The function of the cross members is to provide support for the longitudinal side members in order to avoid distortion and to stabilise the axle beams and axle.

### Aisle beam

Cabby's chassis lies directly under the floor and supports it along the full length and width of the caravan. There is a supporting aisle beam underneath the caravan's aisle that ensures the floor will not start sagging after a few years. A stable floor is of crucial importance, particularly bearing in mind the warm water heating system in the floor.

### Corner steadies

Cabby's corner steadies are secured to the chassis' longitudinal beams. This makes the caravan stable when parked and minimises the risk of developing a soft and wobbly floor,

a common problem with older caravans of other makes.

### Delta axle

The dimensions are allocated with millimetre precision in the chassis and axle for each caravan model, depending among other things on its weight and length. The suspension is optimised to cope with all types of road surface and changes in direction. Thanks to the precise suspension tracking of the delta axle, you can rely on your Cabby to be stable on any road surface without giving you any nasty surprises.

### ATC – AL-K Trailer Control

The ATC anti-snaking system has been a standard specification for many years on caravans from Cabby. ATC manages to automatically correct the oscillating motions 'snaking'—that can occur when making evasive manoeuvres and at 'critical speed', which varies depending on factors including the car, the load, the nature of the road, the caravan and weather conditions.

### How the ATC anti-skid system works

Well-judged braking stretches out the unit and the snaking is corrected, gently and smoothly before you have even noticed it is happening. ATC is a compact unit with sensors, control electronics and a traversing motor connected to the caravan's brake system. A correctly installed thirteen-pole socket on the towing

### ABBY SAFETY SYSTEM

globally unique ATC anti-snaking system

Stiff and well-balanced chassis for maximum roadworthiness

Delta axle that helps create a lower centre of gravity

Optimised suspension to cope with all types of road surface

AKS stabiliser hitch provides stabilising effect

Nitrogen-filled tyres

vehicle is required for the unit to function. With an ordinary socket the caravan functions as normal but without ATC.

The sensors continually monitor the caravan's lateral movement and send continuous signals to the control unit, which determines whether it has to do anything to maximise driving stability. The control unit can trace oscillating tendencies at an early stage as well as distinguish them from other lateral movements such as long bends and tricky road conditions. It can also sense whether the snaking will abate on its own or not. In the latter case, the caravan's service brake is activated by means of the traversing motor and the unit is gently braked.

### AKS stabiliser hitch

The AKS stabiliser hitch provides a stabilising effect. It does this by means of a friction lining that presses against the car's tow ball. In situations where you are being overtaken by large vehicles, the hitch reduces the lateral forces that arise from the slipstream of the

overtaking vehicle. Together with other units in the Cabby safety system, the AKS stabiliser hitch offers superior roadworthiness.

### Tyres and rims

To ensure maximum road-holding and safety, all Cabby caravans are fitted with aluminium rims on caravans with tandem axles. The tyres are also filled with nitrogen instead of air in order to extend their service life. The nitrogen means that the pressure remains constant over time without being affected by the temperature. A feature that benefits safety, fuel consumption and, not least, the environment.

### Safest on the road

A clear indication of the integrity of our safety systems lies in the usvagn Camping's caravan test, in which Cabby was awarded the most points in the 'On the road' category. The secret lies in the ATC anti-snaking system which is fitted as standard to all our caravans. See the double test in usvagn Camping, any .





# The Cabby method

One of the main reasons for choosing a Cabby is the supreme comfort offered by each of our caravans. The chief reason for our comfortable indoor climate is the Cabby method, which offers by far the best insulation on the market.

The Cabby method includes well-proven technology used in the construction of all our caravans and is based on an extremely highly-insulating material polyurethane—which creates a minimum of seams in the walls and ceiling. This construction keeps the cold out in the

winter and the heat out in the summer. It also helps give the caravan increased stability and road-holding capability.

### How the Cabby method works

The sides, floor and roof of the caravan are constructed in complete

units. We inject highly-insulating polyurethane material between the outer and inner walls, in the roof and the floor. The polyurethane expands and hardens in every nook and cranny of the unit. A stable sandwich structure is formed, with plywood on the inside and strong



aluminium panels on the outside. The construction is immensely strong with very few wooden joists, thus minimising the risk of thermal bridges.

**Polyurethane**

polyurethane consists of insulating, microscopic gas bubbles with a closed cell structure. These are resistant to moisture, an important property due to the fact that as little as one per cent of moisture in the material will reduce insulating capacity by 50 per cent. Polyurethane insulation is also, of course, a breeding ground for micro-organisms and mould.

**Durability**

The insulation we use is proven to have good ageing properties. Polyurethane insulation retains its essential qualities for well over 20 years and the technology is increasingly gaining ground as an effective insulation material, especially in the building industry where

energy issues have come to the fore. The superior insulating qualities of polyurethane are becoming increasingly in demand.

**Thermal conductivity**

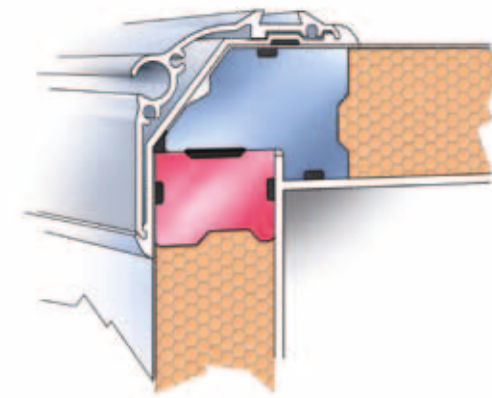
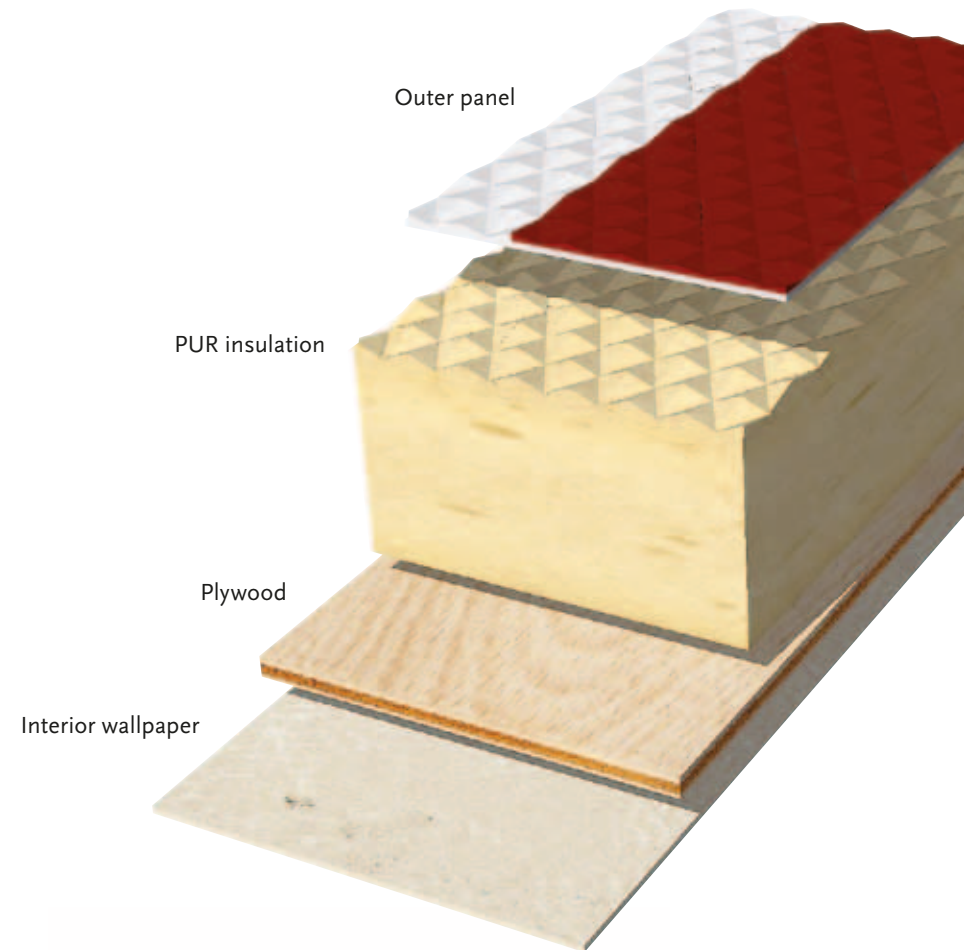
The type of polyurethane foam used in Cabby caravans has a thermal conductivity of 0.025 W m<sup>-1</sup> K<sup>-1</sup>, while insulation of the Ecoprime type, which is used by some of our competitors, has a thermal conductivity of 0.035 W m<sup>-1</sup> K<sup>-1</sup>. This means that Cabby's polyurethane insulation has a 30 per cent better insulating capacity value than Ecoprime insulation.

**A small comparison**

Cabby has 50 mm insulation in the walls and roof, and 25 mm insulation in the floor. To highlight the difference, comparisons can be made with other materials used to insulate caravans and buildings. The conclusion is obvious even though other

i l i e  
 i e-i - e-  
 e - e A  
 e- ill e  
 e- le -  
 i i - e i l e  
 e - - -  
 e l i e l  
 i e- ell e e  
 e- e e-  
 e- e - e

T e i e l i e e  
 e i e  
 i - l - e e  
 - l e e-L  
 i l e - i i l  
 e i e e e - -  
 l l i - e i  
 e- l - i e e e  
 - e x - e e l -  
 e T e - e l i  
 e l - i - - e  
 e i e  
 e - e







caravan manufacturers use thicker insulation than Cabby, they do not have sufficiently thick insulation to approach Cabby's insulating qualities.

### Cabby's heating system

All our caravans are equipped with warm water central heating and several heating coils in the floor. The heating system creates a more pleasant indoor climate, heats the drainage outlet and reduces the risk of the water freezing. The heat even reaches spaces where you keep items such as shoes and ski boots.

### Controls

There are air gaps behind the sofas, beds, overhead cupboards and kitchen units to ensure the heat in your caravan is as evenly distributed and ventilated as possible. The whole of the heating system is easy to regulate using the control panel strategically placed in the kitchen area. At the heart of the heating system is an Alde Compact central

heating boiler kW electric Calor gas-. The boiler has three output settings and operates with both and Calor gas.

### Heat transfer

In addition to the insulating effect, the Cabby method means that the heating pipes in the floor distribute heat evenly over the entire floor surface via the heating plates. The superior insulation also ensures the heat does not find its way down to the underside of the floor, but gives maximum benefit to the interior. The underfloor heating system is also equipped with individual shut-off valves.

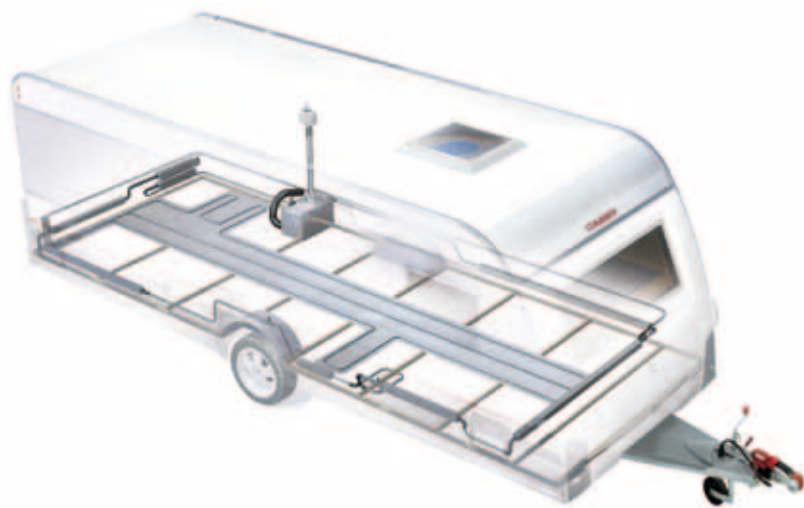
### Capacity

Cabby's superior insulation also contributes to extending the envelope for the outside temperature with which the caravan can cope using a Amp fuse. ery few campsites currently offer Amps, which is required in order to utilise the full w capacity of the boiler at .

The coils in the underfloor heating are particularly effective as the heating plates in the floor distribute the heat evenly.

## ABBY OMFORT ON E T

- ! unbeatable insulating qualities throughout the caravan
- ! Warm water central-heating with three output settings
- ! Three heating coils for even and comfortable heat distribution
- ! Good-sized air gaps that help create even, well-ventilated warmth
- ! Walk-in wardrobe in most models and shoe compartment with heating coils
- ! Heated drainage system
- ! Wide door with interrupted thermal bridge



# Standard equipment that is always included

Cabby maintains a high standard from the outset without this costing you any extra. What you get is a caravan with exciting features and interesting solutions that others call extra equipment. You can see below what is included when you invest in a caravan from Cabby.

1. Transparent sun roof 50x70 cm with lighting
2. Drying cupboard with ventilation fan and protective cover in most models
3. Gas leak tester
4. Ski compartment with LED lighting
5. Underbed storage with LED lighting that is accessed from outside
6. Dometic refrigerator 189 122 litres
7. Shoe compartment with heating coil
8. Wardrobe with lighting in the majority of the caravans
9. Soft Close system and sorting-at-source container in the kitchen
10. Over-rim mixer tap in the kitchen
11. U -style four-burner gas cooker
12. Soft-close overhead cupboard



### Guarantee

- 5 year water-ingress guarantee
- 2 year overall guarantee

### Cabby Safety System

- ATC anti-snaking system
- AL- O chassis
- A S stabiliser
- Delta axle with rubber torsion
- AL- O tow bar cover
- Reversing light
- High positioned brake light
- Gas leak tester
- External heating connection
- Residual current device

### Cabby Comfort Concept

- Waterborne underfloor heating with several heating coils
- Alde Compact boiler 3.5 kW (electric Calor gas)
- Waterborne radiator system
- Shoe compartment with heating coil
- Drying cupboard with ventilation fan in most models
- Heated drain
- Hot water
- The market's best insulation with high-efficiency polyurethane
- Internal wastewater tank 25 litres
- Wide door with interrupted thermal bridge

### Cooking enjoyment

- Soft Close drawers in kitchen
- Soft-close wall cupboard
- Cooker hood ventilator fan with two speeds
- Four-burner gas cooker
- Over-rim ceramic mixer tap in kitchen
- 45 litre water tank with exterior refilling
- Dometic refrigerator 189/122 litres
- Sorting-at-source container

### More comfortable sleep

- Anatomic viscoelastic mattresses Bultex 8 cm and Sensus 6 cm
- Adjustable head end, divisible in double bed

### Bathroom toilet

- Revolving cassette toilet with flushing
- Ceramic mixer tap

### Media

- Awning fittings with connection for cable-TV
- Speakers in sitting area
- Pre-installed audio and video cable for DVD

### Miscellaneous

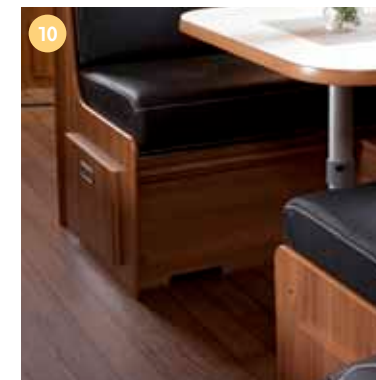
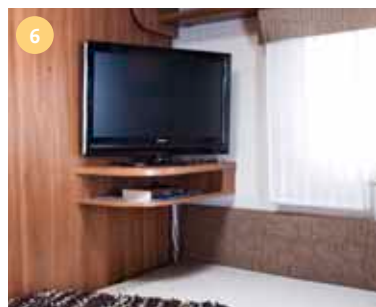
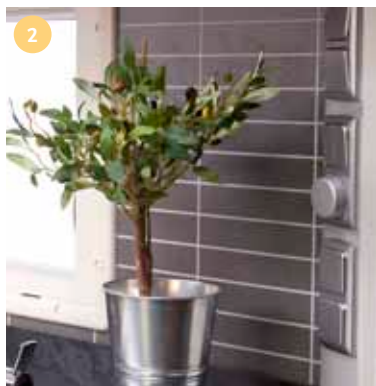
- 15 aluminium rims (14 on caravans with tandem axles)
- One-key system
- Awning lighting (LED)
- Awning rails in aluminium strips
- Aluminium electric bracket
- Aluminium grab handle
- Indoor outdoor temperature gauge
- Transparent skylight 40x40 in bathroom
- Transparent sun roof 50x70 cm with lighting
- DeLux sofa cushions (Bultex)
- Kitchen lighting (LED)
- Underbed storage with lighting (LED) that is accessed both from inside and outside
- Tinted openable windows (entrance door window not openable)
- Tinted double-glazed windows with polyurethane frame
- Cassette blinds with mosquito net
- Premium corner steadies on all caravans with tandem axles
- Lighting in Calor Gas storage compartment (LED)
- Over-cupboard lighting (LED)
- Lighting in wardrobe in most caravans
- External storage compartment (not 740 FM).
- Ski compartment with lighting (LED)



# Design your caravan to be -ust how you want it

Cabby's interior options are carefully designed to offer the best in comfort and functionality but also to give your caravan a more personal touch.

1. Gas alarm N 5
2. Replaceable accent wall in kitchen
3. Central vacuum cleaner
4. Upper bed cupboard
5. Omnidirectional T aerial
6. T shelf with aerial, 230 and D D cable
7. Head cushions
8. U -style four-burner gas cooker with oven and grill, as well as drawer at the bottom
9. Refrigerator door in brushed aluminium and microwave oven
10. Extra shoe compartment doors by ends of dinette
11. Media centre D D
12. Three curtains for bunk bed



# Interior options

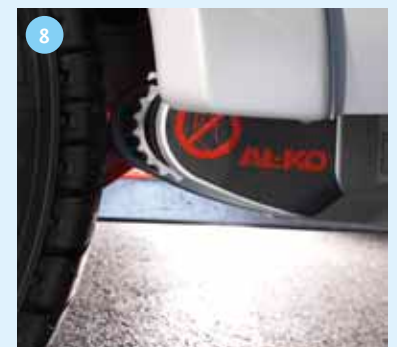
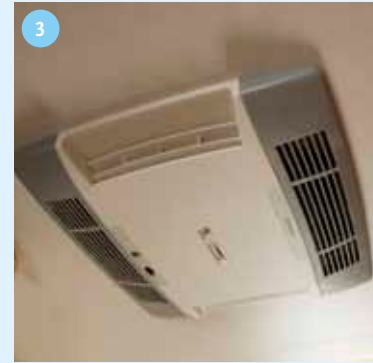
	570 F3	570 F4	620 L	620 F3	620 F4	620 F2B	620 F2C	650 L	650 F3	650 F4	650 FT	650 F2B	650 F2C	700 LTD	700 LTF	700 FT	700 M	700 M2C	740 LTD	740 LTF	740 FT	740 FM	740 M	740 M2C	740 F2C	800 LTD	800 LTF	800 FT	800 FTM	800 FTM2C	800 F3F	800 F2C		
<b>Beds</b>																																		
Bedding for upper bed cupboard, without ladder	T	T		T	T		T		T	T	T		T			T	T	T			T		T	T	T				T	T	T	T	T	
Bedding for upper bed cupboard, with ladder			T			T		T				T		T	T		T		T	T			T			T	T	T	T		T		T	
3-bunk bed, width 70 cm, incl. 3 windows, bedspread and air gaps							T						T						T					T	T						T	T	T	
3-bunk bed, narrow, instead of dinette, incl. 3 windows, bedspread and air gap																													T					
2-bunk bed, narrow, instead of dinette, incl. 2 windows, bedspread and air gap																													T					
L-bunk beds, width 82 cm. Incl. 4 windows, bed and extra storage compartment			T					T						T	T				T	T						T	T							
Wide F3 bed for F2B and F2C						T	T					T	T																					
Extra long bunk bed (192.5 cm) in nursery (wardrobe instead of desk)																										T							T	
Upper bed cupboard on rear right side (DS)	T		T	T		T	T	T	T			T	T	T	T		T	T	T	T			T	T		T	T	S				T		
Upper bed cupboard on rear left side (DS)		T	T		T	S		T		T	T	S		T	T	T			T	T	T				T	T	T	T	T	T	T		T	
Fixed upper bed rear right side (DS) 70 cm	T		T	T		T	T	T	T			T	T	T	T		T	T	T	T			T	T		T	T					T		
Fixed upper bed rear left side (FS) 70 cm		T	T		T			T		T	T			T	T	T			T	T	T				T	T	T	T	T	T	T		T	
Fixed side cupboard instead of upper bed cupboard						T						T					T						T						T	T			T	
Protective side rail for fixed upper bed	T	T	T	T	T	T	T	T	T	T	T	T	T	T	T	T	T	T	T	T	T	T	T	T	T	T	T	T	T	T	T	T	T	
Electrically-controlled head end in beds per pair	T	T	T	T	T	T	T	T	T	T	T	T	T	T	T	T	T	T	T	T	T	T	T	T	T	T	T	T	T	T	T	T	T	
<b>Kitchen</b>																																		
189 litre refrigerator with separate freezer instead of 122 litres	T*	T*	T*	T*	T*	T*	T*	S	S	S	T*	S	S	T	T	S	S	S	S	S	S	S	S	S	S	S	S	S	S	S	S	S	S	
189 litre refrigerator and walk-in wardrobe															T*	T*																		
Refrigerator door in brushed aluminium	T*	T*	T*	T*	T*	T*	T*	T*	T*	T*	T*	T*	T*	T*	T*	T*	T*	T*	T*	T*	T*	T*	T*	T*	T*	T*	T*	T*	T*	T*	T*	T*	T*	T*
Brushed aluminium on wall	T*	T*	T*	T*	T*	T*	T*	T*	T*	T*	T*	T*	T*	T*	T*	T*	T*	T*	T*	T*	T*	T*	T*	T*	T*	T*	T*	T*	T*	T*	T*	T*	T*	T*
Replaceable accent wall	T	T	T	T	T	T	T	T	T	T	T	T	T	T	T	T	T	T	T	T	T	T	T	T	T	T	T	T	T	T	T	T	T	
Overhead cupboard doors, white frosted acrylic	S°	S°	S°	S°	S°	S°	S°	S°	S°	S°	S°	S°	S°	S°	S°	S°	S°	S°	S°	S°	S°	S°	S°	S°	S°	S°	S°	S°	S°	S°	S°	S°	S°	
Overhead cupboard doors, black acrylic	T*	T*	T*	T*	T*	T*	T*	T*	T*	T*	T*	T*	T*	T*	T*	T*	T*	T*	T*	T*	T*	T*	T*	T*	T*	T*	T*	T*	T*	T*	T*	T*	T*	
Cooker U -style four-burner gas cooker with oven and grill 3 4 (door at the bottom)	T*	T*	T*	T*	T*	T*	T*	T*	T*	T*	T*	T*	T*	T*	T*	T*	T*	T*	T*	T*	T*	T*	T*	T*	T*	T*	T*	T*	T*	T*	T*	T*	T*	
Cooker U -style four-burner gas cooker with oven and grill 3 4 (pull-out drawer at the bottom)	T	T	T	T	T	T	T	T	T	T	T	T	T	T	T	T	T	T	T	T	T	T	T	T	T	T	T	T	T	T	T	T	T	
Microwave oven mounted in pantry	T	T	T	T	T	T	T	T	T	T	T	T	T	T	T	T	T	T	T	T	T	T	T	T	T	T	T	T	T	T	T	T	T	
Microwave oven over fridge	T*	T*	T*	T*	T*	T*	T*	T*	T*	T*	T	T*	T*			T*	T*	T*	T*	T*	T*	T*	T*	T*			T*	T*	T*	T*	T*	T*	T*	
2.5 section kitchen instead of 2 sections	T*																																	



	570 F3	570 F4	620 L	620 F3	620 F4	620 F2B	620 F2C	650 L	650 F3	650 F4	650 FT	650 F2B	650 F2C	700 LTD	700 LTF	700 FT	700 M	700 M2C	740 LTD	740 LTF	740 FT	740 FM	740 M	740 M2C	740 F2C	800 LTD	800 LTF	800 FT	800 FTM	800 FTM2C	800 F3F	800 F2C			
<b>Media</b>																																			
T shelf with aerial, 230 and D D cable	T*			T*					T*								T*	T*				T*	T*	T*	T*			T*	T*	T*	T*	T*	T*		
T bracket Sky 2 with swivel arm	T	T	T	T	T	T	T	T	T	T	T	T	T	T	T	T	T	T	T	T	T	T	T	T	T	T	T	T	T	T	T	T	T		
T aerial, omnidirectional	T*	T*	T*	T*	T*	T*	T*	T*	T*	T*	T*	T*	T*	T*	T*	T*	T*	T*	T*	T*	T*	T*	T*	T*	T*	T*	T*	T*	T*	T*	T*	T*	T*		
Extra pair of speakers with cables	T*	T*	T*	T*	T*	T*	T*	T*	T*	T*	T*	T*	T*	T*	T*	T*	T*	T*	T*	T*	T*	T*	T*	T*	T*	T*	T*	T*	T*	T*	T*	T*	T*		
CD player	T	T	T	T	T	T	T	T	T	T	T	T	T	T	T	T	T	T	T	T	T	T	T	T	T	T	T	T	T	T	T	T	T		
Media centre D D	T*	T*	T*	T*	T*	T*	T*	T*	T*	T*	T*	T*	T*	T*	T*	T*	T*	T*	T*	T*	T*	T*	T*	T*	T*	T*	T*	T*	T*	T*	T*	T*	T*	T*	
<b>Miscellaneous</b>																																			
Individually adjustable underfloor and radiator heating with unique switch for the temperature sensors in the sleeping section and the front sitting area	T*	T*	T*	T*	T*	T*	T*	T*	T*	T*	T*	T*	T*	T*	T*	T*	T*	T*	T*	T*	T*	T*	T*	T*	T*	T*	T*	T*	T*	T*	T*	T*	T*	T*	
GSM boiler control	T	T	T	T	T	T	T	T	T	T	T	T	T	T	T	T	T	T	T	T	T	T	T	T	T	T	T	T	T	T	T	T	T	T	
Walk-in wardrobe with T shelf, door side														T*	T*																				
Wardrobe instead of shower											T			T	T	T				T	T	T					T	T	T	T	T	T	T	T	
Wardrobe instead of desk rear																										T									T
Bed pedestals instead of wardrobes rear																							T												
Extra shoe compartment doors by ends of dinette																	T						T						T	T			T		
Front sitting area and dinette leather						T							T				T						T						T	T			T		
Front sitting area leather	T	T	T	T	T		T	T	T	T	T		T	T	T	T		T	T	T	T	T		T	T	T	T	T	T	T	T	T	T	T	
Headrests for sofa group	T	T	T	T	T	T	T	T	T	T	T	T	T	T	T	T	T	T	T	T	T	T	T	T	T	T	T	T	T	T	T	T	T	T	
Mix of standard fabrics	T	T	T	T	T	T	T	T	T	T	T	T	T	T	T	T	T	T	T	T	T	T	T	T	T	T	T	T	T	T	T	T	T	T	
Battery back-up Alde panel	T	T	T	T	T	T	T	T	T	T	T	T	T	T	T	T	T	T	T	T	T	T	T	T	T	T	T	T	T	T	T	T	T	T	
Shower curtain with ceiling rail	T	T		T	T				T	T							T	T					T	T											T
Extendible shower tap	T	T	T	T	T	T	T	T	T	T		T	T				T	T					T	T	T	T								T	T
Central vacuum cleaner	T	T	T	T	T	T	T	T	T	T	T	T	T	T	T	T	T	T	T	T	T	T	T	T	T	T	T	T	T	T	T	T	T	T	
Curtains for middle sitting area																	T							T					T	T					
Curtain for bunk bed							T						T					T						T								T	T		
Curtains (x3) for bunk bed							T						T					T						T								T	T		
Electric towel dryer	T*	T*	T*	T*	T*	T*	T*	T*	T*	T*	T*	T*	T*	T*	T*	T*	T*	T*	T*	T*	T*	T*	T*	T*	T*	T*	T*	T*	T*	T*	T*	T*	T*	T*	T*
Electricity meter	T	T	T	T	T	T	T	T	T	T	T	T	T	T	T	T	T	T	T	T	T	T	T	T	T	T	T	T	T	T	T	T	T	T	T
Charge booster	T	T	T	T	T	T	T	T	T	T	T	T	T	T	T	T	T	T	T	T	T	T	T	T	T	T	T	T	T	T	T	T	T	T	T
Gas alarm N 5	T	T	T	T	T	T	T	T	T	T	T	T	T	T	T	T	T	T	T	T	T	T	T	T	T	T	T	T	T	T	T	T	T	T	T
Fire-extinguisher, powder, 1 kg over door	T	T	T	T	T	T	T	T	T	T	T	T	T	T	T	T			T	T	T	T	T	T	T	T	T	T	T	T	T	T	T	T	T
Fire-extinguisher bracket for 6 kg tube	T	T	T	T	T	T	T	T	T	T	T	T	T	T	T	T	T	T	T	T	T	T	T	T	T	T	T	T	T	T	T	T	T	T	T
Magazine holder in imitation leather	T	T	T	T	T	T	T	T	T	T	T	T	T	T	T	T	T	T	T	T	T	T	T	T	T	T	T	T	T	T	T	T	T	T	T

# exterior options

Put your own personal stamp on your caravan. Cabby's exterior options make a real difference, and you can choose from a wide range of smart solutions and practical details of the highest quality.



1. Wheel housing cover
2. Cycle rack front for two bikes
3. Air conditioning Dometic Blizzard 2200
4. Exterior Calor gas outlet
5. Connection for fixed water supply and outlet for shower
6. Mosquito net door
7. AL- O Big Foot corner steady
8. Caravan Mover

S standard  
T optional  
Caionna standard  
mpty not available

	570 F3	570 F4	620L	620 F3	620 F4	620 F2B	620 F2C	650 L	650 F3	650 F4	650 FT	650 F2B	650 F2C	700 LTD	700 LTF	700 FT	700 M	700 M2C	740 LTD	740 LTF	740 FT	740 FM	740 M	740 M2C	740 F2C	800 LTD	800 LTF	800 FT	800 FTM	800 FTM2C	800 F3F	800 F2C				
<b>Chassis</b>																																				
Premium AL- O jockey wheel with balance and suspension	T	T	T	T	T	T	T	T	T	T	T	T	T	T	T	T	T	T	T	T	T	T	T	T	T	T	T	T	T	T	T	T	T	T		
Michelin tyres for single axle (900 kg)	T	T	T	T	T	T	T	T	T	T	T	T	T																							
Nokian tyres for single axle (950 kg)														T	T	T	T	T																		
Spare wheel in boot, aluminium rim, 15 , single axle	T	T	T	T	T	T	T	T	T	T	T	T	T	T	T	T	T	T																		
Spare wheel in boot, aluminium rim, 14 , tandem axle																				T	T	T	T	T	T	T	T	T	T	T	T	T	T	T		
Spare wheel in boot, steel rim, 15 , single axle	T	T	T	T	T	T	T	T	T	T	T	T	T	T	T	T	T	T																		
Spare wheel in boot, steel rim, 14 , tandem axle																				T	T	T	T	T	T	T	T	T	T	T	T	T	T	T		
Spare wheel holder for steel wheel	T	T	T	T	T	T	T	T	T	T	T	T	T	T	T	T	T	T	T	T	T	T	T	T	T	T	T	T	T	T	T	T	T	T		
AL- O electric corner steadies	T	T	T	T	T	T	T	T	T	T	T	T	T	T	T	T	T	T	T	T	T	T	T	T	T	T	T	T	T	T	T	T	T	T		
AL- O Big Foot corner steady	T	T	T	T	T	T	T	T	T	T	T	T	T	T	T	T	T	T	T	T	T	T	T	T	T	T	T	T	T	T	T	T	T	T		
AL- O Premium corner steadies, 4 pcs	T	T	T	T	T	T	T	T	T	T	T	T	T	T	T	T	T	T	T	T	T	T	T	T	T	T	T	T	T	T	T	T	T	T		
Caravan Mover tandem axle																				T	T	T	T	T	T	T	T	T	T	T	T	T	T	T		
Caravan Mover single axle	T	T	T	T	T	T	T	T	T	T	T	T	T	T	T	T	T	T																		
<b>Body</b>																																				
Openable window 55x55 cm, toilet side wall											T			T	T	T				T	T	T					T	T	T	T	T					
Awning, roof mounted	T	T	T	T	T	T	T	T	T	T	T	T	T	T	T	T	T	T	T	T	T	T	T	T	T	T	T	T	T	T	T	T	T	T	T	
Roof rails in aluminium	T*	T*	T*	T*	T*	T*	T*	T*	T*	T*	T*	T*	T*	T*	T*	T*	T*	T*	T*	T*	T*	T*	T*	T*	T*	T*	T*	T*	T*	T*	T*	T*	T*	T*	T*	
Air conditioning Dometic Blizzard 2200	T	T	T	T	T	T	T	T	T	T	T	T	T	T	T	T	T	T	T	T	T	T	T	T	T	T	T	T	T	T	T	T	T	T	T	
Cycle rack front for two bikes	T	T	T	T	T	T	T	T	T	T	T	T	T	T	T	T	T	T	T	T	T	T	T	T	T	T	T	T	T	T	T	T	T	T	T	
Mosquito net door	T*	T*	T*	T*	T*	T*	T*	T*	T*	T*	T*	T*	T*	T*	T*	T*	T*	T*	T*	T*	T*	T*	T*	T*	T*	T*	T*	T*	T*	T*	T*	T*	T*	T*	T*	
HE 12 De Luxe 96x65,5 cm with lighting	T*	T*	T*	T*	T*	T*	T*	T*	T*	T*	T*	T*	T*	T*	T*	T*	T*	T*	T*	T*	T*	T*	T*	T*	T*	T*	T*	T*	T*	T*	T*	T*	T*	T*	T*	T*
Sunroof Mini-Heki 40x40 cm above the bed	T*	T*	T*	T*	T*	S	S	T*	T*	T*	T*	S	S	T*	T*	T*	T*	T*	T*	T*	T*	T*	S	T*	T*	S/T*	T*	T*	T*	T*	T*	S/T*	S/T*			
Extra awning rail door side	T	T	T	T	T	T	T	T	T	T	T	T	T	T	T	T	T	T	T	T	T	T	T	T	T	T	T	T	T	T	T	T	T	T	T	
Extra awning rail window side	T	T	T	T	T	T	T	T	T	T	T	T	T	T	T	T	T	T	T	T	T	T	T	T	T	T	T	T	T	T	T	T	T	T	T	
Extra awning rail rear end	T	T	T	T	T	T	T	T	T	T	T	T	T	T	T	T	T	T	T	T	T	T	T	T	T	T	T	T	T	T	T	T	T	T	T	
Extra storage compartment			T					T						T	T					T	T						T	T								
Calor gas change-over switch for two bottles, SecuMotion Duo	T	T	T	T	T	T	T	T	T	T	T	T	T	T	T	T	T	T	T	T	T	T	T	T	T	T	T	T	T	T	T	T	T	T	T	
Exterior Calor gas outlet	T	T	T	T	T	T	T	T	T	T	T	T	T	T	T	T	T	T	T	T	T	T	T	T	T	T	T	T	T	T	T	T	T	T	T	
Exterior shower outlet	T	T	T	T	T	T	T	T	T	T	T	T	T	T	T	T	T	T	T	T	T	T	T	T	T	T	T	T	T	T	T	T	T	T	T	
Connection for fixed water supply	T	T	T	T	T	T	T	T	T	T	T	T	T	T	T	T	T	T	T	T	T	T	T	T	T	T	T	T	T	T	T	T	T	T	T	
Wheel housing cover, both sides	T	T	T	T	T	T	T	T	T	T	T	T	T	T	T	T	T	T	T	T	T	T	T	T	T	T	T	T	T	T	T	T	T	T	T	
Extra battery incl. box				T	T	T	T	T	T	T		T	T	T	T	T	T	T				T	T	T	T	T	T	T	T	T	T	T	T	T	T	

# iew us in detail

By choosing one of our caravans you are acquiring the market's best insulation, an AL- O chassis with ATC anti-snaking system and three underfloor coils with warm water heating. You are also getting a plethora of smart solutions that make Cabby one of the most comfortable caravans available on the market.

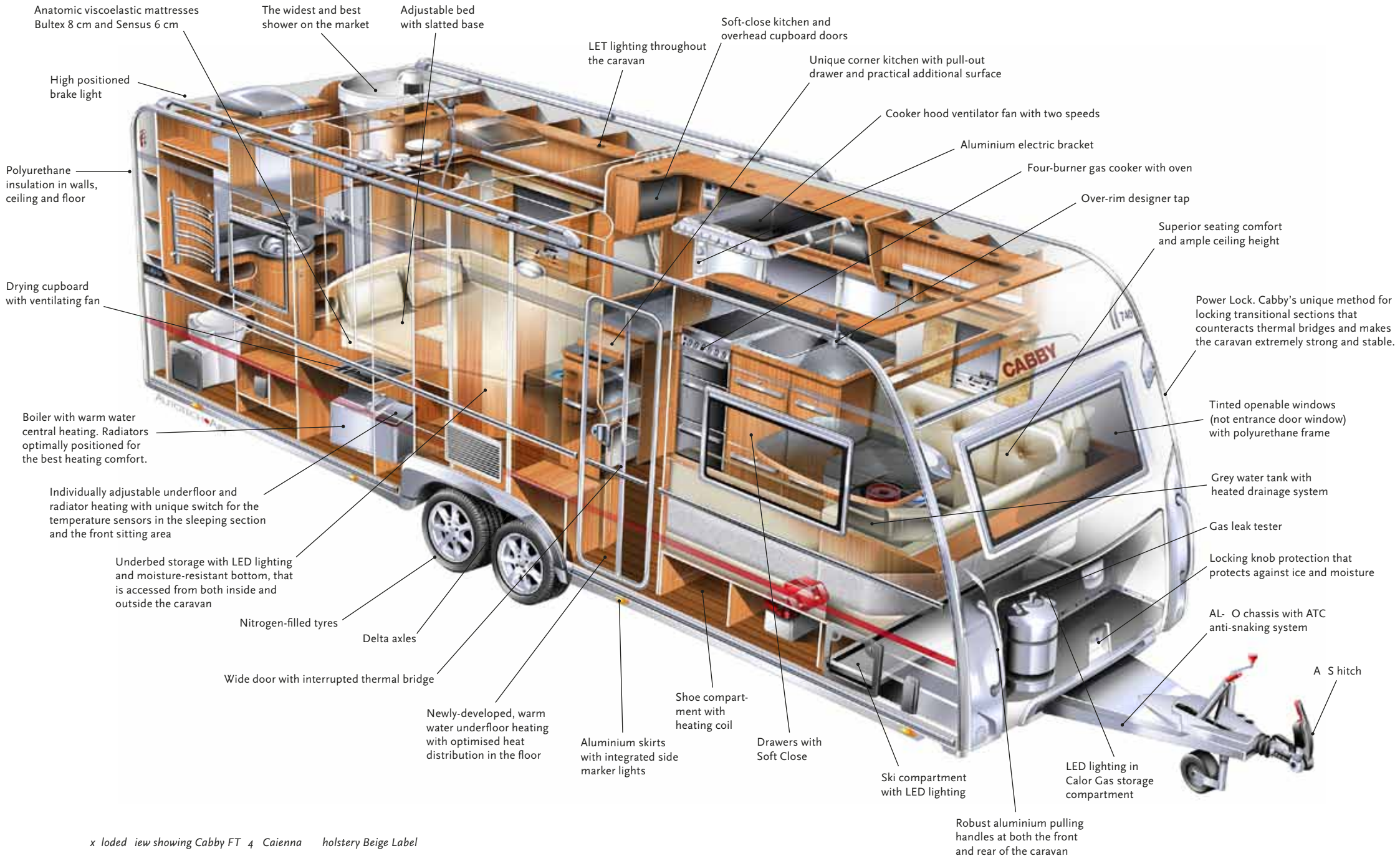
In a Cabby, you will sleep soundly at night in comfortable beds with adjustable head ends. The bathroom is practically furnished and has a toilet with electromagnetic flushing. Several of our caravans

also have a shower cubicle. There is ample storage space provided and soft Close drawers in the kitchen. The practical kitchen area is tastefully furnished with everything you need. We have also provided for you

to sort your waste at source. Interior lighting includes ceiling lights, spot lights and bedroom lights, and the already cosy atmosphere in each caravan is further enhanced with the addition of carefully selected fabrics

of the highest quality.

You will find many sound reasons for investing in a Cabby. Which is why we are more than happy for you to view us in detail.



View showing Cabby FT 4 Caienna holstery Beige Label



## SINGLE

### L Single



Cabby 620 L



Cabby 650 L

### LTD Single



Cabby 700 LTD



Cabby 740 LTD



Cabby 800 LTD

### LTF Single



Cabby 700 LTF



Cabby 740 LTF



Cabby 800 LTF



## DOUBLE

### F3 Double



Cabby 570 F3



Cabby 620 F3



Cabby 650 F3

### F4 Double



Cabby 570 F4



Cabby 620 F4



Cabby 650 F4

### FT Double



Cabby 650 FT



Cabby 700 FT



Cabby 740 FT

### FM Double



Cabby 740 FM



**FLEXI**

**M Flexi**



Cabby 700 M



Cabby 740 M

**F2B Flexi**



Cabby 620 F2B



Cabby 650 F2B

**FT Flexi**



Cabby 800 FT

**FTM Flexi**



Cabby 800 FTM

— = Window      = Refrigerator      = Direction



**FAMILY**

**M2C Family**



Cabby 700 M2C



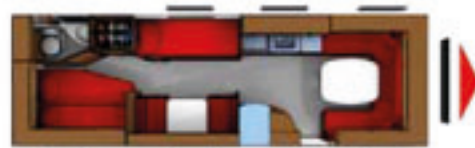
Cabby 740 M2C

**FTM2C Family**



Cabby 800 FTM2C

**F3F Family**



Cabby 800 F3F

**F2C Family**



Cabby 620 F2C



Cabby 650 F2C



Cabby 740 F2C



Cabby 800 F2C



Cabby 570 F3 Double



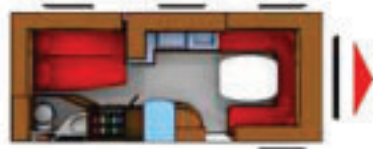
Cabby 570 F4 Double



Cabby 620 L Single



Cabby 620 F3 Double



Cabby 620 F4 Double



Cabby 620 F2B Flexi



Cabby 620 F2C Family



Cabby 650 L Single



Cabby 650 F3 Double



Cabby 650 F4 Double



Cabby 650 FT Double



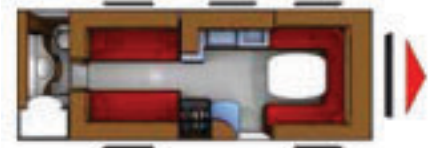
Cabby 650 F2B Flexi



Cabby 650 F2C Family



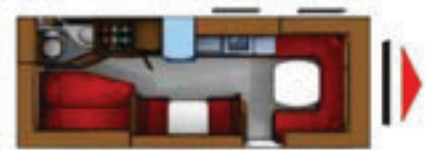
Cabby 700 LTD Single



Cabby 700 LTF Single



Cabby 700 FT Double



Cabby 700 M Flexi



Cabby 700 M2C Family



740

800



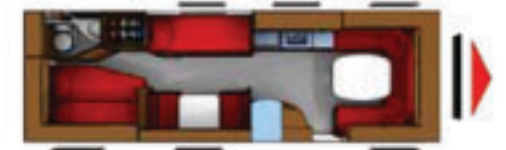
Cabby 740 LTD Single



Cabby 740 M2C Family



Cabby 800 LTD Single



Cabby 800 F3F Family



Cabby 740 LTF Single



Cabby 740 F2C Family



Cabby 800 LTF Single



Cabby 800 F2C Family



Cabby 740 FT Double



Cabby 800 FT Flexi



Cabby 740 FM Double



Cabby 800 FTM Flexi



Cabby 740 M Flexi



Cabby 800 FTM2C Family

— =Window

■ =Refrigerator

▶ =Direction





CABBY

XSK 363



Feel free to visit one of our expert dealers or go to our website [www.cabby.se](http://www.cabby.se)